



CAF RAIL: Light Crane System

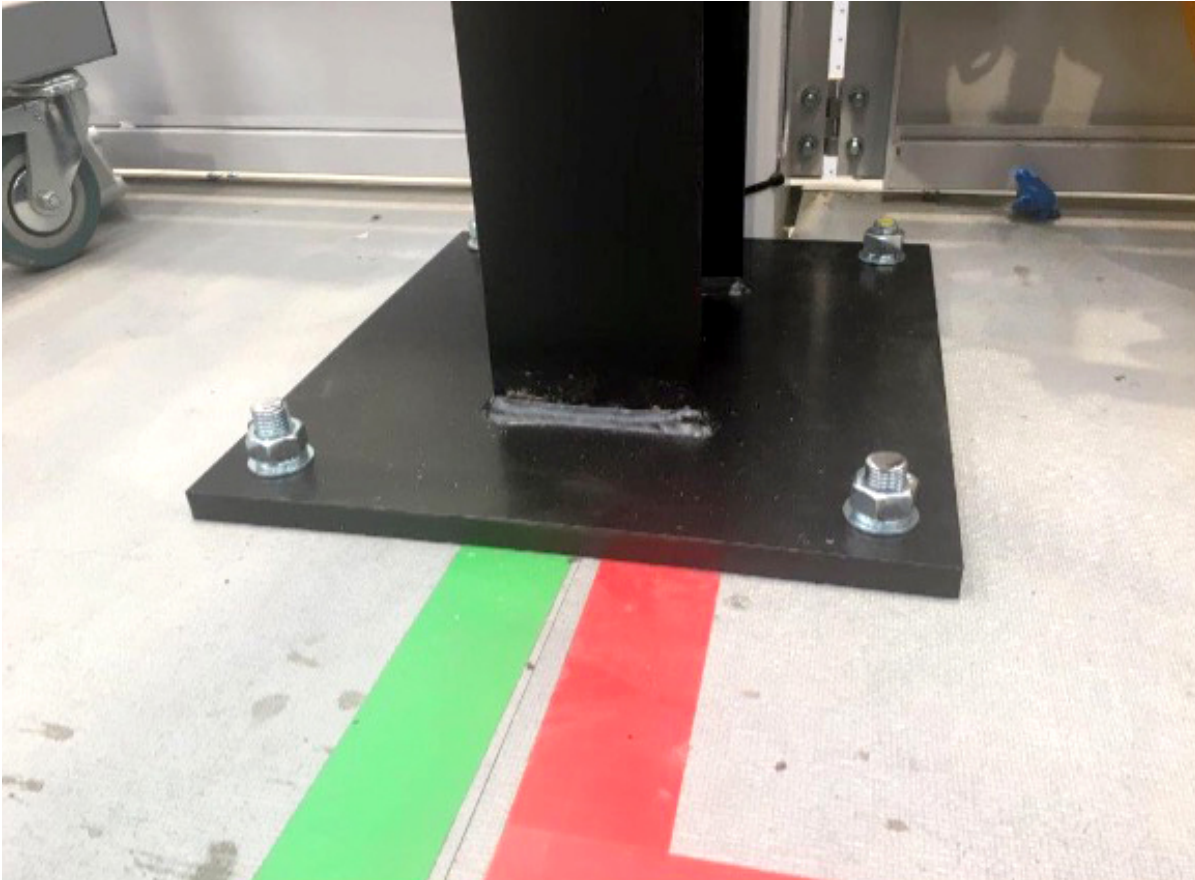
The Challenge

CAF Rail needed a safe and efficient system to lift glass windows and doors into position using one operator each time instead of two at their new train maintenance depot in Newport Wales. In order to keep the floor access clear, the system had to be mounted on the maintenance platform which meant it had to be both safe and robust.

Headquartered in Spain, CAF Rail are a leader in the railway industry offering an array of products and services in railway related markets.

The Solution

Street Cranexpress delivered a complete solution - from design to installation, including the addition of an electric chain hoist with auxiliary power to a vacuum lifter that enabled one operator to lift and position the glass safely onto the train carriages. Street Cranexpress designed and installed the above system rated at 160kgs SWL.



Mounting the system

- The system was mounted on the maintenance platform rather than the floor to keep floor access clear.
- Thicker posts were used to sustain the weight of the system.



Sustaining the weight

- Due to the system being free-standing, posts had to be secured and strengthened using bolts.
- The system had to be rigid enough to have no crane headers so that the existing overhead could access the train carriage from above.



The chain hoist

- Street Cranexpress installed the electric chain hoist with auxiliary power to a vacuum lifter that enabled one operator to lift and position the glass.
- This saved time and resources and ensured a safe lift.